



BMJ SERIES HYDRAULIC MOTOR

BMJ series motor adapt the advanced Geroler gear set designed with high speed distribution flow and high pressure, and have good stability in low speed , and can keep high volume efficiency. The unit can be supplied the individual variant in operating multifunction in accordance with requirement of applications.

Characteristic features:

* Advanced manufacturing devices for the Geroler gear set, which use low pressure of start-up, provide smooth and reliable operation and high efficiency.

* The output shaft adapts in needle roller bearings that permit high axial and radial forces. The case can offers capacities of high pressure and high torque in the wide of applications.

* Advanced design in high speed distribution flow, which can automatically compensate in operating with high volume efficiency and long life , provide smooth and reliable operation.

* Lowest leakage rate, most accurate timing methods.Commutator rotates 6x faster than shaft speed. It make the distribution in a high precision reduces life-cycle cost, maintain high volume efficiencies and can run very smoothly at low speed, gear box not required.

Main Specification

Type		BMJ 65	BMJ 80	BMJ 100	BMJ 125	BMJ 160	BMJ 200	BMJ 230	BMJ 250	BMJ 295	BMJ 315	BMJ 375
Geometric displacement (cm ³ /rev.)		66.8	81.3	101.6	127	157.2	193.6	226	257	287.8	314.5	370
Max. speed (rpm)	cont.	667	543	439	350	283	229	247	216	196	178	152
	int.	842	689	553	441	355	289	328	287	254	235	199
Max. torque (N·m)	cont.	126	157	191	245	307	382	378	381	393	448	439
	int.	176	215	268	335	422	520	528	543	547	587	613
Max. output (kW)	cont.	8.3	8.8	7.9	8.9	8.9	9	9.9	9.3	8.7	8	7.6
	int.	13.9	14.4	13.5	14.1	15.6	15.7	17.9	16.5	15.6	14.3	14
Max. pressure (MPa)	cont.	14	14	14	14	14	14	12	11	10	10	9
	int.	19	19	19	19	19	19	165	15.5	14.5	13.5	12.5
	peak	20	20	20	20	20	20	18	18	17	16	16
Max. flow (L/min)	cont.	45	45	45	45	45	45	57	57	57	57	57
	int.	57	57	57	57	57	57	75	75	75	75	75

* Continuous pressure:Max. value of operating motor continuously.

* Intermittent pressure:Max. value of operating motor in 6 seconds per minute.

* Peak pressure:Max. value of operating motor in 0.6 second per minute.

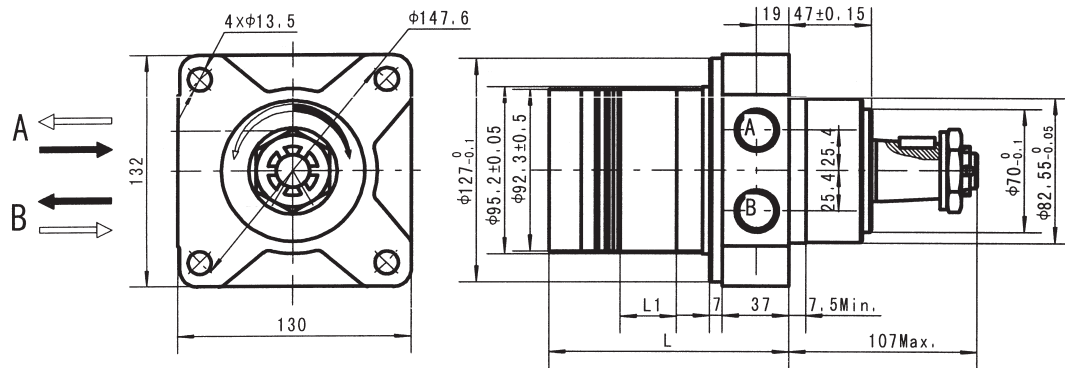
BMJ DIMENSIONS MOUNTING DATA

Wheel Mount

Code : WS Ports A、B 7/8-14 O-Ring

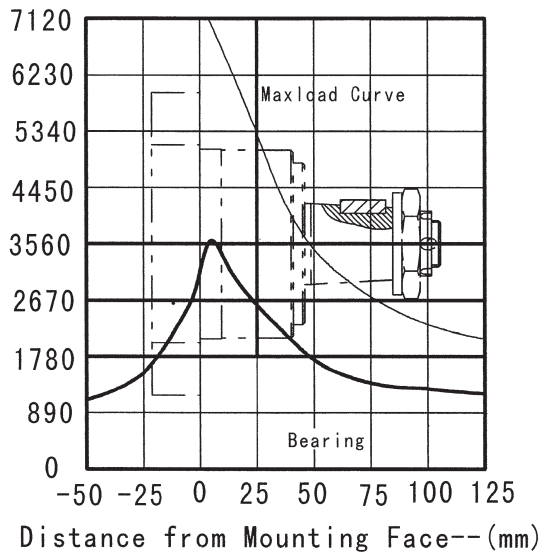
Code : WD Ports A、B G1/2

Code : WM Ports A、B M22x1.5



Displacement (cm ³ /rev.)	65	80	100	125	160	200	230	250	295	315	375
L1(mm)	13	16	20	25	30.5	38.1	44	50	56	62	74
L(mm)	115	118	122	127	132.5	140	146	152	158	164	176
Weight(kg)	9	9.1	10.4	10.6	10.9	11.3	11.8	12.2	12.6	12.9	13.4

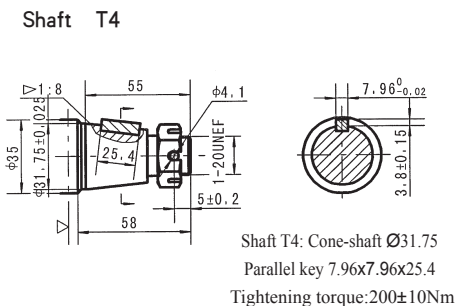
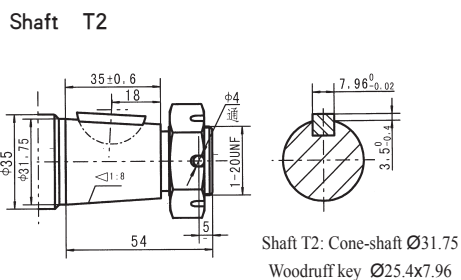
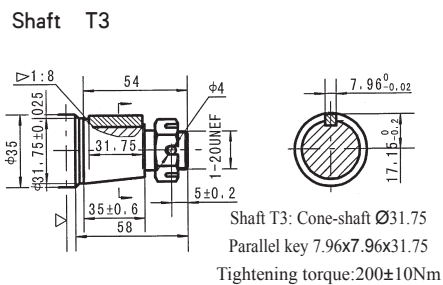
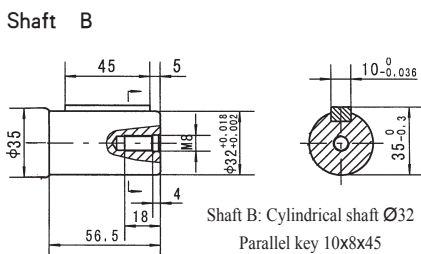
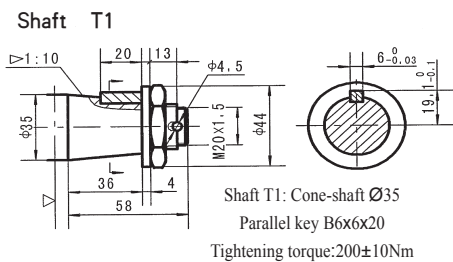
Side Load-(daN)



The bearing curve represents allowable bearing loads for an L₁₀ bearing life at 3 × 10⁶ revolutions.

The maximum load curve is defined by bearing static load capacity, This curve should not be exceeded at any time including shock loads.

BMJ Shaft Extensions For Dimensions Data



▷ Motor Mounting Surface

Order Information

1 2 3 4 5 6 7

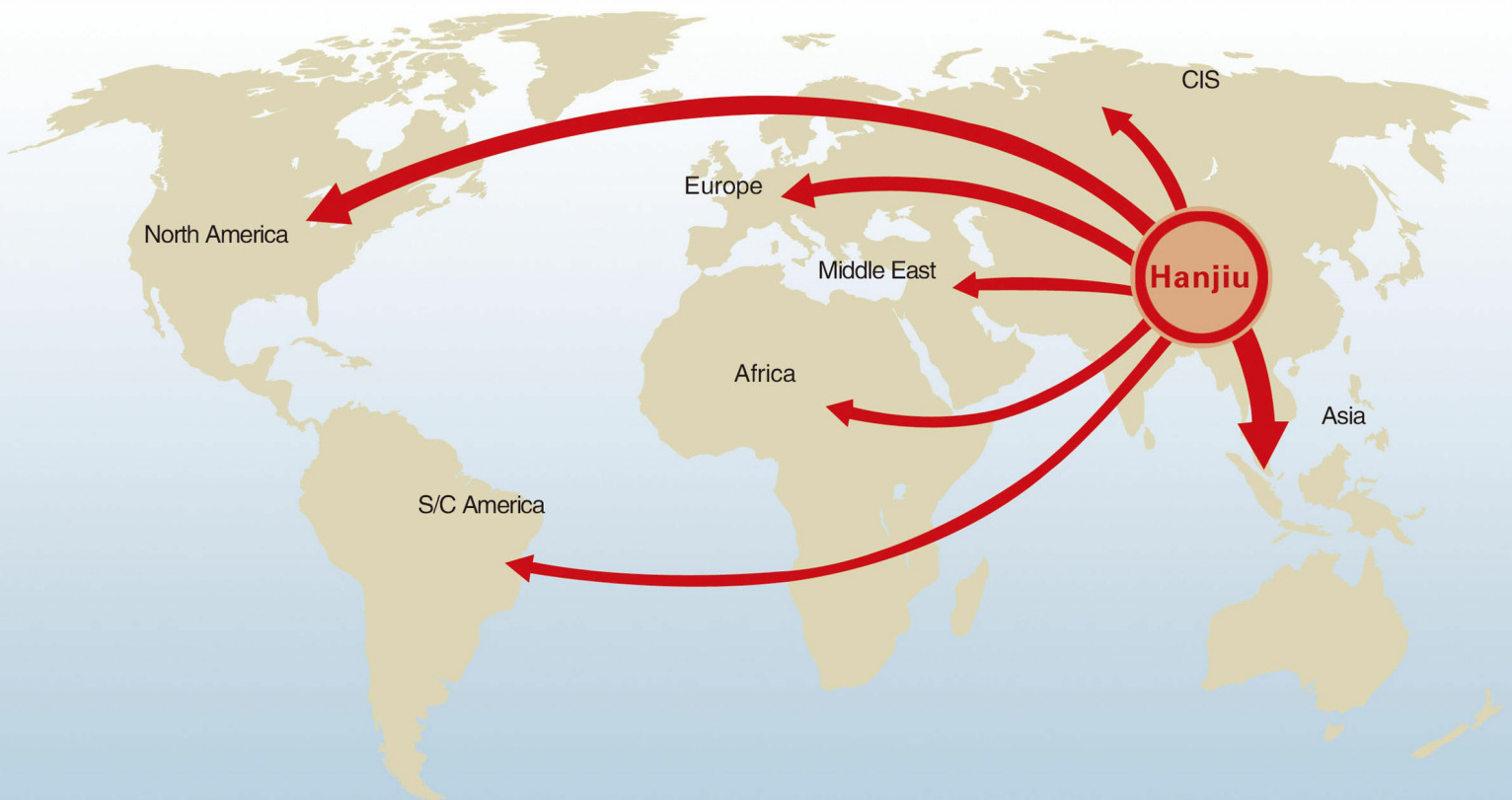
BMJ

Pos.1	2	3	4	5	6	7
Code	Disp.	Flange , Pilot , Ports	Output Shaft	Rotation direction	Paint	Unusually function
65	WS	4-Ø13.5 Wheel-flange, Pilot Ø82.55x7, Port 7/8-14 O-ring	T1 Cone-Shaft Ø35, Parallel key B6x6x20	Standard	No paint	
80	WD	4-Ø13.5 Wheel-flange, Pilot Ø82.55x7, Port G1/2	T2 Cone-Shaft Ø31.75, Woodruff key Ø25.4x7.96	Opposite	Blue	Omit
100	WM	4-Ø13.5 Wheel-flange, Pilot Ø82.55x7, Port M22x1.5	T3 Cone-Shaft Ø31.75, Parallel key 7.96x7.96x31.75	R	Black	Standard
125			T4 Cone-Shaft Ø31.75, Parallel key 7.96x7.96x25.4		Silver Grey	
160			B Cylindrical Shaft Ø32, Parallel key 10x8x45			
200						
230						
250						
295						
315						
375						

Note: When the table is used, please fill the code of left rows in the table and give us, which the code information consists of construction, displacement, mounting flange, output shaft and ports. If the specification is not in the table or you have specific requirements, please contact us.

专业做液压-专注做精品

PROFESSIONAL ON HYDRAULIC- FOCUS ON HIGH QUALITY



石家庄寒九科技有限公司

地址：中国河北石家庄友谊北大街398号

电话：+86 (311) 68123061

传真：+86 (10) - 80115555-568844

邮编：050000

网址：www.hjhydraulic.com

邮箱：manager@sjzhjism.com

SHIJIAZHUANG HANJIU TECHNOLOGY CO.,LTD.

Add: No. 398 Youyi Street, Shijiazhuang, Hebei, China

Tel: +86 (311) 68123061

Fax: +86 (10) - 80115555-568844

Post code: 050000

Web: www.hjhydraulic.com

Email: manager@sjzhjism.com